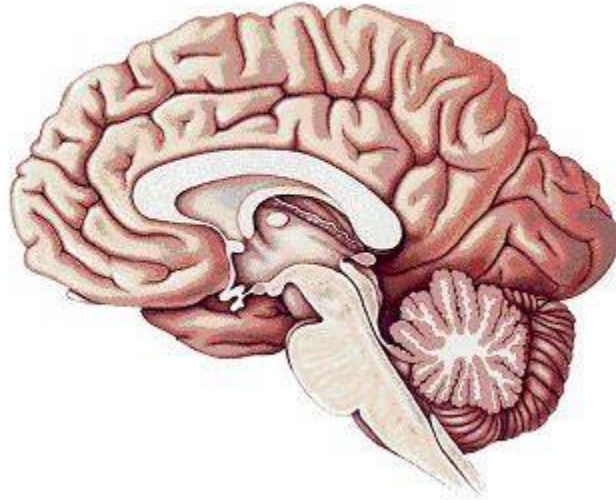


# Build-A-Brain Project



**Part I:** In groups, create a dimensional cross section model of the brain showing major structures using various colors of play-doh, buttons and beads. Use your notes and diagrams as reference tools. Be sure to name your brain and label its parts. Remember the other Child Development class will be voting on the BEST model.

**Part II:** Create a poem, song or RAP about your brain model. It should contain at least ten (10) different, important facts. This will be neatly written or typed and placed beside your brain model for judging with 10 facts underlined or highlighted and numbered. You may create your own tune or use an existing, familiar one like “Twinkle, Twinkle Little Star”.

Group Members:

---

Rubric:

Criteria:	Present	Not Present
Model Contains all Major Parts	(10)	(0)
Brain is Named & Labeled Correctly	(10)	(0)
Neatness/Creativity/Craftsmanship	(10)	(0)
Poem/Song/RAP with Ten Facts is Present & Displayed with Brain	(10)	(0)
Made Good Use of Class Time	(5)	(0)
Cooperated with Group	(5)	(0)
<b>Total:</b>		